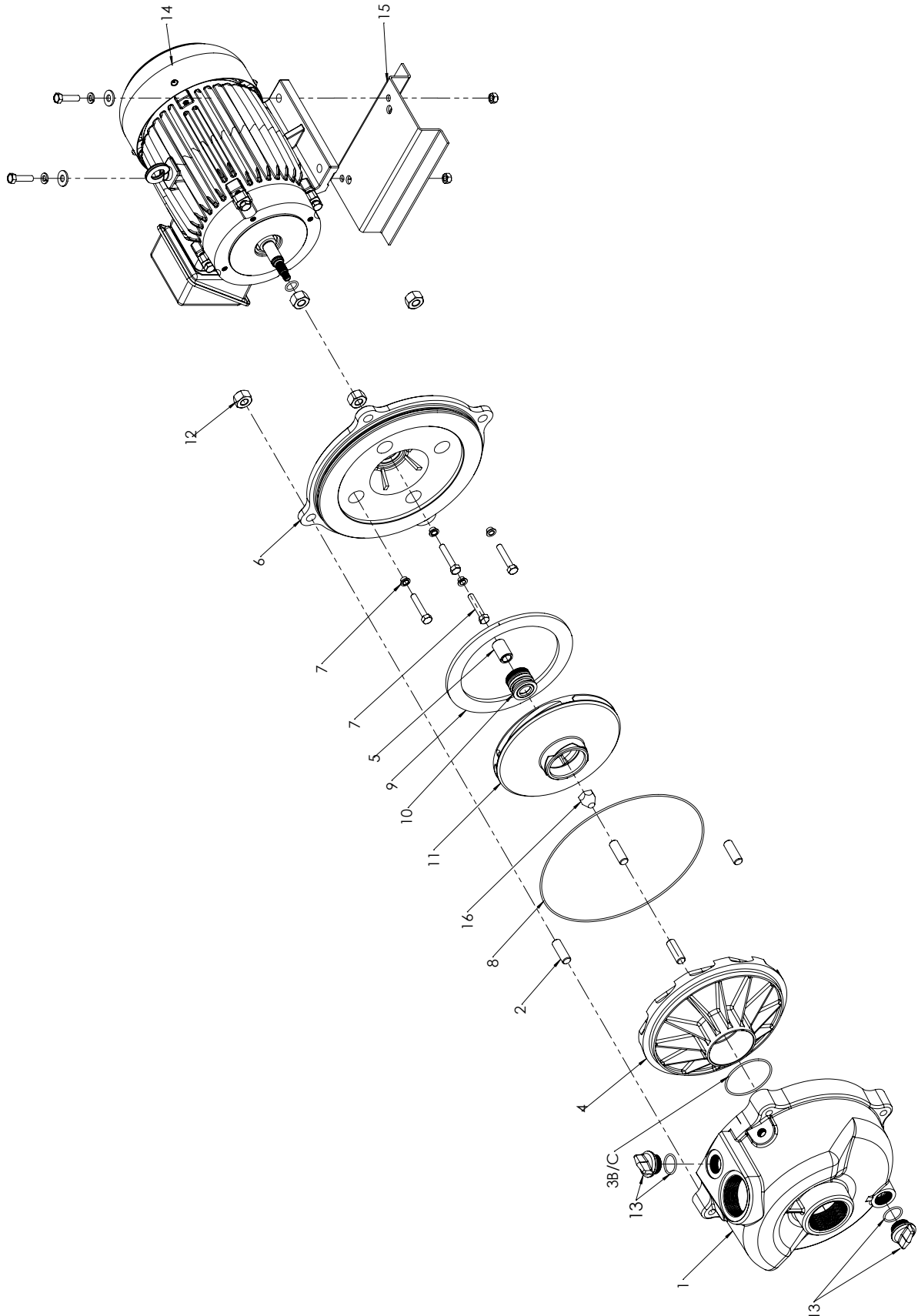


182 / 183 / 184 / 185 / 187 Models



WATER TRANSFER

Drawings are indicative only, product appearance may change slightly.

PARTS LIST TABLE

18 Series Range

MODEL	182	183	184	185	187
PART NUMBER	318200	318300	318400	-	318700
	318230	318330	318430	318530	318730

REF No.	DESCRIPTION	PART. NO		PART. NO		PART. NO		PART. NO		PART. NO	
1	CASING & STUD ASSY.	800283	1PC	800283	1PC	800283	1PC	800283	1PC	800283	1PC
2	STUD (PK/10)	800113	1PC	800113	1PC	800113	1PC	800113	1PC	800113	1PC
NS	ADAPTOR	504280	1PC	504280	1PC	-	1PC	-	1PC	-	1PC
NS	ORING CASING SPIGOT	702231	1PC	702231	1PC	-	1PC	-	1PC	-	1PC
3B	ORING ADAPTOR SPIGOT	702203	1PC	702203	1PC	-	1PC	-	1PC	-	1PC
3C	ORING DIFFUSER	-	1PC	-	1PC	702192	1PC	702192	1PC	702192	1PC
4	DIFFUSER	301431K	1PC	301481K	1PC	301884	1PC	301884	1PC	301941	1PC
5	SHAFT SLEEVE KIT	800895K	1PC	800895K	1PC	801007K	1PC	-	1PC	801007K	1PC
6	YOKE	301650GN	1PC	301650GN	1PC	301650GN	1PC	302010GN	1PC	301650GN	1PC
7	BOLT & BOLT SEAL (PK/12)	800242K	1PC	800242K	1PC	800242K	1PC	800242K	1PC	800242K	1PC
8	ORING CASING	700207K	1PC	700207K	1PC	700207K	1PC	700207K	1PC	700207K	1PC
9	BAFFLE	401322	1PC	401323	1PC	-	1PC	-	1PC	401322	1PC
10	SEAL KIT (INC. SEAL + ITEM 5)	800890K	1PC	800890K	1PC	800890K	1PC	800871K	1PC	800890K	1PC
11	IMPELLER - 1PH	506353K	1PC	503843K	1PC	403976K	1PC	-	1PC	504413	1PC
	IMPELLER - 3PH	506353K	1PC	503849K	1PC	403979K	1PC	404036	1PC	504413	1PC
12	NUT (PK/12)	800093K	1PC	800093K	1PC	800093K	1PC	800093K	1PC	800093K	1PC
13	PRIMING PLUG & ORING	800017K	1PC	800017K	1PC	800017K	1PC	800017K	1PC	800017K	1PC
NS	PLUG	700230	1PC	700230	1PC	700230	1PC	700230	1PC	700230	1PC
14	MOTOR - 1PH	800445	1PC	800446	1PC	801350	1PC	-	1PC	800446	1PC
	MOTOR - 3PH	800448	1PC	800449	1PC	800450	1PC	800451	1PC	800449	1PC
15	BASE	504290GN	1PC	504290GN	1PC	504290GN	1PC	504290GN	1PC	504290GN	1PC
16	IMPELLER NUT (3PH)	6032550	1PC	6032550	1PC	6032550	1PC	6032550	1PC	6032550	1PC
NS	WASHER (PK/20)	800151	1PC	800151	1PC	800151	1PC	-	1PC	800151	1PC